

NANO 48

21-24 February 2010

Austin, Texas, USA

AURORA

<http://www.zurich.ibm.com/aurora/>

Jeroen Massar, IBM Zurich Research Laboratory

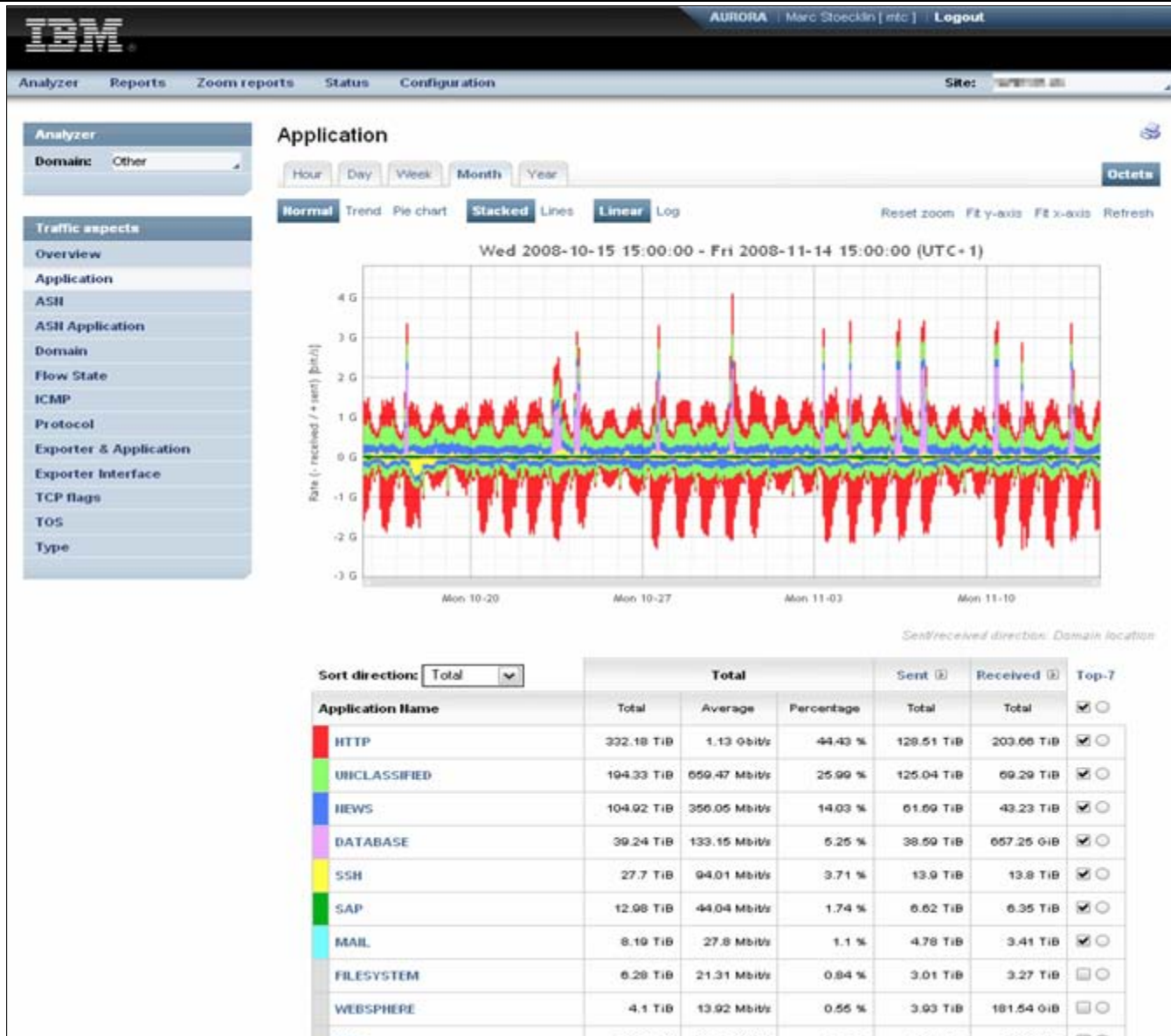
jma@zurich.ibm.com

AURORA

- **AURORA = Research project, with cool researchy features**
 - **TNPFA = Tivoli's commercial edition**

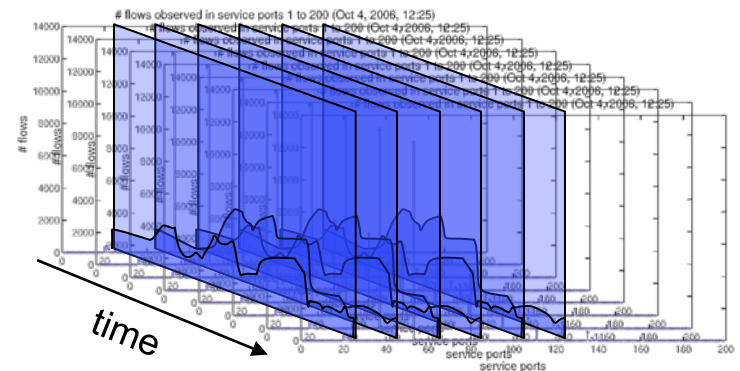
 - **Why this Lighting talk?**
 - **Get Operator Input on what problems they see in networks that they might want to get rid off too.**
- IBM has huge datacenters where AURORA gets deployed, and also at (ext) customer sites, but due to legal etc getting feedback/input is a bit hard as we tend to not be allowed to look at the data sets)**

Generic UI



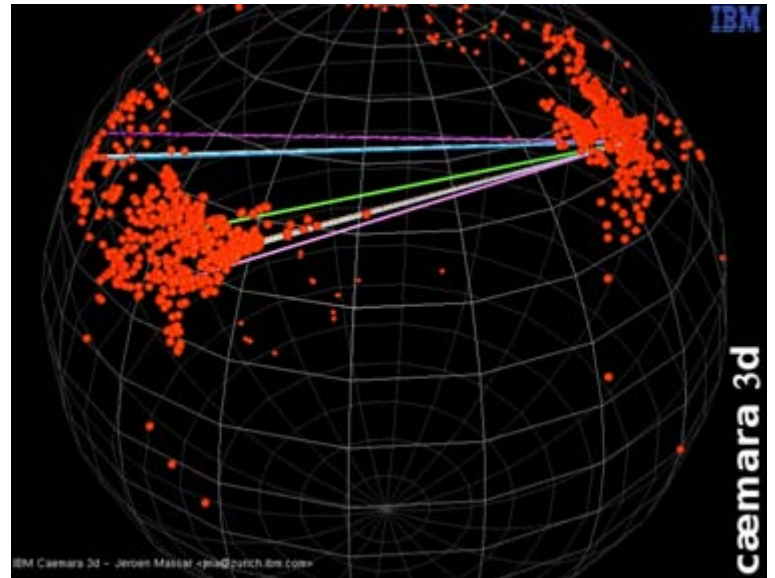
Some Features

- Intended for large networks $>10\text{GE}$ traffic
- Cool thing: one small box to analyze that
 - But AIX runs on extremely big iron if we need to look at a lot more than that ;)
- Supports all Netflow & sFlow
- Network Behavior Modelling component
 - Which thus detects anomalies etc



Research Features

- Caemara3d (->)
- Traffic displayed on network maps
BGP/ISIS/OSPF based
- Chokepoint estimator for future growth / possible SPOF etc.



What about your network?

- **Anything you can't detect?**
- **Anything you can't resolve?**
- **Anything you would like to see?**

Questions?

Jeroen Massar

JRM1-RIPE

AURORA @ <http://www.zurich.ibm.com/aurora/> google(IBM aurora)

<http://unfix.org/~jeroen/>

jeroen@unfix.org

<http://www.zurich.ibm.com/~jma/>

jma@zurich.ibm.com